



Pipe and cable penetration

POLO-RDS Evolution
Floor penetration
System extension

Protective cover

Sealing against concrete and for leveling

Socket DN 110 for pipe connection or sealing elements

Positioning openings

for fixation at the reinforcement

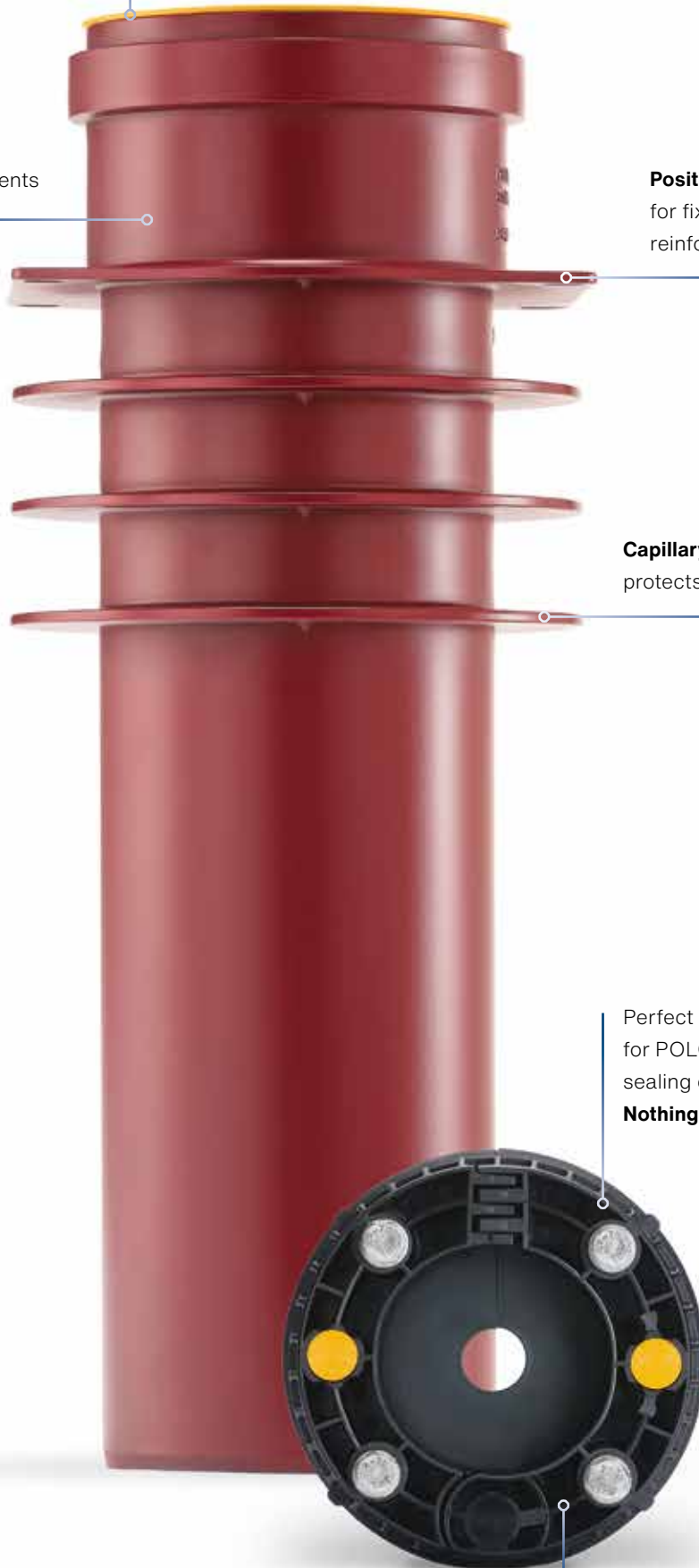
Capillary barrier

protects against ground moisture

Perfect holding fixture for POLO-RDS Evolution sealing elements

Nothing can slip through!

Tested radon tightness





POLO-RDS Evolution Floor penetration

The system extension for absolute tightness

The POLO-RDS Evolution Floor penetration is the perfect extension for the unique POLO-RDS Evolution pipe penetration system. Fully compatible with all DN 100 sealing elements, POLOPLAST now supplies a complete solution for all wall and floor penetrations.

POLO-RDS Evolution Floor penetration is the **perfect complete solution** offering maximum security and leak tightness for the full service life. POLO-RDS Evolution guarantees the leak-tight ducting of cables and pipes up to 1 bar.

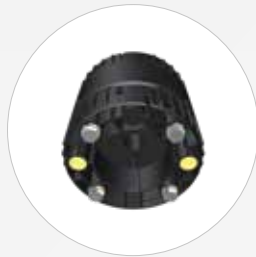
The patent for simplicity

Just like all of the system solutions from POLOPLAST, the POLO-RDS Evolution Floor penetration stands for absolute safety and simplicity.



POLO-RDS Evolution
Protective cover

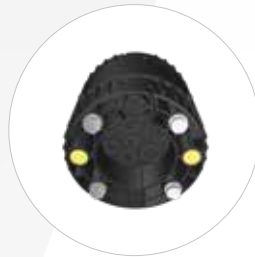
System-compliant sealing elements



**Sealing element
hinged DN 100**
A. no. 01011



**Sealing element
hinged DN 100**
A. no. 01015



**Sealing element with multiple
ducts hinged DN 100**
A. no. 01010



**Blank sealing element
DN 100**
A. no. 01020

POLO-RDS Evolution Longbow

Practical insertion of media pipelines

- Connection of 6 x 15° bends no longer necessary
- Simple and jolt-free insertion of cables and pipes ensured by smooth internal wall
- Compatible with POLO-RDS Evolution Floor penetration and DN 110 PVC sewage pipes



Simple penetration of cables and pipes installed either vertically or horizontally into the building.

Wall solution

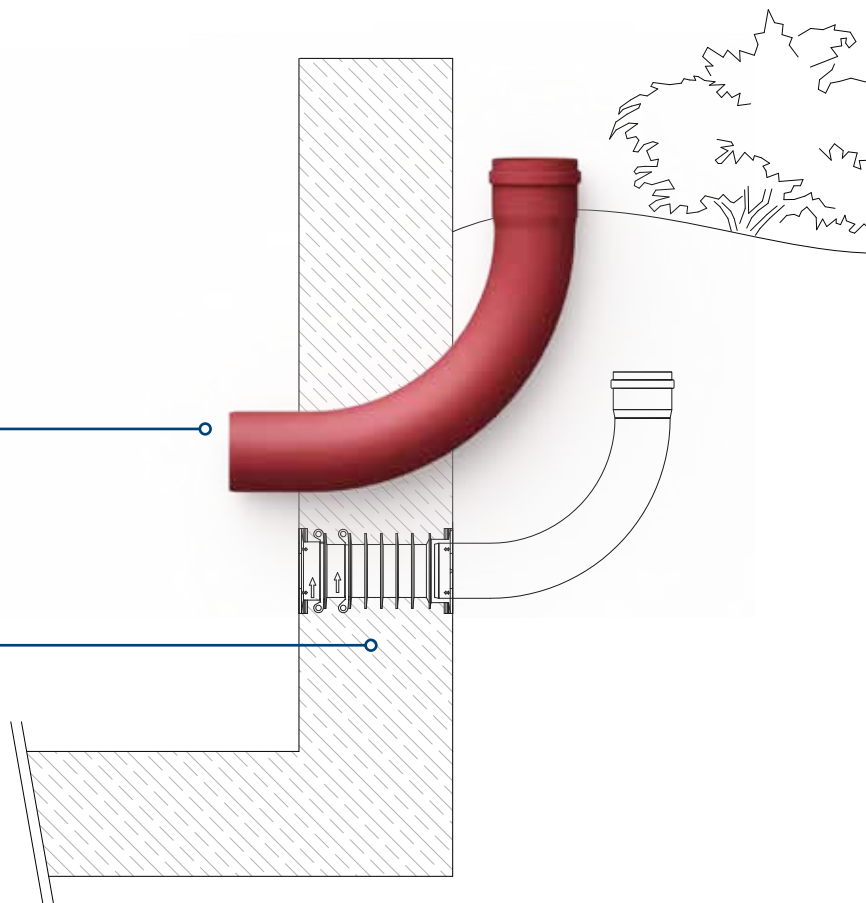
Connection to **POLO-RDS Evolution Ribbed pipe**

POLO-RDS Evolution Longbow DN 110

Jolt-free insertion of cables at 90°
change of direction
A. no. 01048

POLO-RDS Evolution Ribbed pipe DN 100

Tried and tested, leak-tight wall ducts

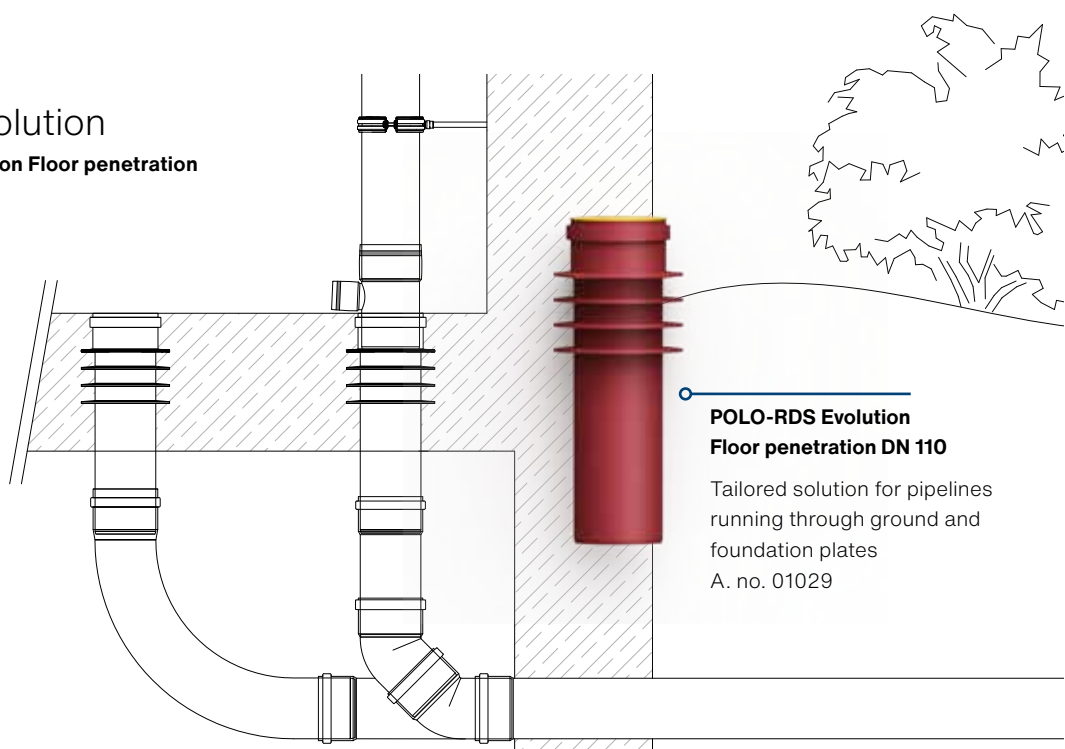


Foundation plate solution

Connection to **POLO-RDS Evolution Floor penetration**

POLO-RDS Evolution Floor penetration DN 110

Tailored solution for pipelines running through ground and foundation plates
A. no. 01029



Advantages for the construction company

Professional and fully compatible solution for the foundation plate:

- Simple, professional creation of a floor penetration
- Ready-to-use product – no additional attachments required
- Guaranteed tightness to concrete
- Capillary barrier protects against ground moisture
- Easy leveling due to integrated cover
- Practical insertion of pipes and cables using POLO-RDS Evolution Longbow DN 110
- Same mounting part for all construction workers, from the concrete paver through to the electrician
- Pre-assembled construction cover to protect against contamination



Perfect for pipes and cables

- Direct integration of **building drainage**
- Connection lines for the **water supply**
- Connection lines for the **power supply**
- Connection lines for **heat pumps**
- **Garden connections** (power supply for a swimming pool, rain water tank, etc.)
- **Data cables** (fibre optic cable, TV cable, etc.)
- **Charging stations** for electric vehicles
- For **retrofit installations**





POLOPLAST – versatile, sustainable, innovative

POLOPLAST is a European technological leader with more than 60 years experience in developing and perfecting plastic pipe systems and compounds. However, it is not just time and experience that guarantee the best quality. The highest degree of passion for progress and the courage to move away from the beaten track drive POLOPLAST to ever greater achievements.

POLOPLAST is a European technological leader with more than 60 years experience in developing and perfecting plastic pipe systems and compounds. However, it is not just time and experience that guarantee the best quality. The highest degree of passion for progress and the courage to move away from the beaten track drive POLOPLAST to ever greater achievements. The highly efficient and long-lasting pipe systems are used for countless projects including building drainage systems, ventilation, waste water disposal and special applications such as bridge drainage. The tailor-made special products are also used in marine and industrial applications. The main focus of all of the products is their safety and reliability while also being extremely user-friendly.

Sustainability at POLOPLAST is of the utmost importance throughout the entire product cycle with commercial, social and environmental objectives all being treated on an equal footing. Careful production, excellent durability and increasingly reusable and recyclable products preserve resources and continuously increase their success.



More information and product details are
available at www.poloplast.com

